

## ALUMINUM GIMBALS

- Solid aluminum up to 50% lighter than brass gimbals.
- Anodized to prevent corrosion.
- Curved vertical slot for improved leverage in rod belts with vertical pin. Scored inside for better adhesion to blank.
- Rounded bottom for use with fighting belts not including gimbal pins.
- Fits snugly into butt caps BCL26 or BCL28.



**AG24 \$11.90 each**

**AG27 \$15.60 each**

| Color  |        |        |         |          |        |        | LENGTH |      | I.D. |      | O.D. |      | DEPTH |      | USE WITH BUTT CAP |
|--------|--------|--------|---------|----------|--------|--------|--------|------|------|------|------|------|-------|------|-------------------|
| Gold   | Silver | TiCH   | Green   | Deep Red | Blue   | Black  | mm     | inch | mm   | inch | mm   | in   | mm    | in   |                   |
| AG24-G | AG24-S | AG24-C | AG24-GR | AG24-DR  | AG24-U | AG24-B | 57.0   | 2.25 | 23.8 | 0.94 | 26.8 | 1.06 | 34.9  | 1.38 | BCL26             |
| AG27-G | AG27-S | AG27-C | AG27-GR | AG27-DR  | AG27-U | AG27-B | 64.0   | 2.50 | 27.2 | 1.07 | 31.5 | 1.24 | 41.3  | 1.63 | BCL28             |



## FIGHTING BUTTS HEAVY DUTY ALUMINUM

- Heavy duty design for large gamefish.
- Heavy duty anodized aluminum body with rubber cushion.
- Scored inside for better adhesion to blank.

**AF2 \$12.85 each**

### RUBBER CAP FOR AF2



ITEM NO.  
**AF2-RC**

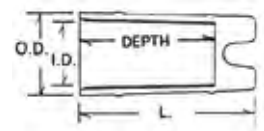
**AF2-RC \$2.50 each**



| Titanium | Black | Gold  | Silver | TiCH  | Green  | Red   | Blue  |
|----------|-------|-------|--------|-------|--------|-------|-------|
| AF2-T    | AF2-B | AF2-G | AF2-S  | AF2-C | AF2-GR | AF2-R | AF2-U |

## GRAPHITE GIMBALS

- Made of durable black graphite/nylon compound - up to 75% lighter than brass gimbals.
- Ribbed inside for firmer bonding. Can be used with our detachable butt caps.



| ITEM NO. | LENGTH |      | I.D. |      | O.D. |      | DEPTH |      | USE WITH BUTT CAP |
|----------|--------|------|------|------|------|------|-------|------|-------------------|
|          | mm     | inch | mm   | inch | mm   | inch | mm    | inch |                   |
| GG21B    | 45.0   | 1.77 | 20.6 | 0.81 | 24.0 | 0.95 | 34.9  | 1.38 | BCM22             |
| GG23B    | 57.0   | 2.24 | 22.5 | 0.89 | 26.7 | 1.05 | 41.3  | 1.63 | BCL24             |
| GG28B    | 71.7   | 2.82 | 27.5 | 1.08 | 30.7 | 1.21 | 56.9  | 2.24 | BCL28             |

**GG21B = \$2.25 ea**

**GG23B = \$2.25 ea**

**GG28B = \$2.75 ea**

# Fighting Butts, Caps & Covers

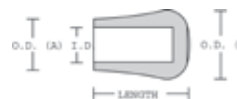
## BUTT CAP / GIMBAL COVERS

- Made of a durable and flexible rubber/vinyl compound with a black textured outer surface.
- Fits the butt end to cushion and protect the rod from becoming soiled or damaged.
- Inside walls are ribbed for firmer bonding to blank or rear grip arbors. The ribs also ensure an ideal fit when butt caps are used as gimbals covers.

BCM, BCL



BC, GBC



| ITEM NO.      | LENGTH |      | I.D. |      | O.D.      |           | fits grip & gimbal models |
|---------------|--------|------|------|------|-----------|-----------|---------------------------|
|               | mm     | inch | mm   | inch | mm        | inch      |                           |
| <b>BCS16B</b> | 16.5   | 0.65 | 15.9 | 0.63 | 21.1      | 0.83      | CUSTOM                    |
| <b>BCS20B</b> | 25.4   | 1.00 | 19.8 | 0.78 | 25.4      | 1.00      | RB5, RB8, RB9, cork       |
| <b>BCS25B</b> | 25.4   | 1.00 | 25.4 | 1.00 | 30.5      | 1.20      | RB11, RB13, RB14          |
| <b>BCM20B</b> | 51.0   | 2.00 | 20.0 | 0.79 | 32.5      | 1.28      | CUSTOM                    |
| <b>BCM22B</b> | 51.0   | 2.00 | 22.0 | 0.87 | 32.5      | 1.28      | GG21B                     |
| <b>BCM24B</b> | 51.0   | 2.00 | 24.0 | 0.94 | 32.5      | 1.28      | CUSTOM                    |
| <b>BCM26B</b> | 51.0   | 2.00 | 26.0 | 1.02 | 32.5      | 1.28      | CUSTOM                    |
| <b>BCL20B</b> | 76.0   | 3.00 | 20.0 | 0.79 | 35.0      | 1.38      | CUSTOM                    |
| <b>BCL22B</b> | 76.0   | 3.00 | 22.0 | 0.87 | 35.0      | 1.38      | CUSTOM                    |
| <b>BCL24B</b> | 76.0   | 3.00 | 24.0 | 0.94 | 35.0      | 1.38      | GG23B                     |
| <b>BCL26B</b> | 76.0   | 3.00 | 26.0 | 1.02 | 35.0      | 1.38      | CUSTOM                    |
| <b>BCL28B</b> | 76.0   | 3.00 | 28.0 | 1.10 | 37.0      | 1.46      | GG28B, AG27               |
| <b>BC19B</b>  | 40.8   | 1.61 | 17.8 | 0.70 | 23.6/34.0 | 1.34/0.93 | CUSTOM                    |
| <b>BC20B</b>  | 40.8   | 1.61 | 18.8 | 0.70 | 23.6/34.0 | 1.34/0.93 | CUSTOM                    |
| <b>GBC22B</b> | 48.7   | 1.92 | 24.2 | 0.95 | 30.2/37.0 | 1.46/1.19 | GG21B                     |
| <b>GBC23B</b> | 48.7   | 1.92 | 25.1 | 0.99 | 30.2/37.0 | 1.46/1.19 | GG23B                     |
| <b>GBC24B</b> | 48.7   | 1.92 | 26.2 | 1.03 | 30.2/37.0 | 1.46/1.19 | AG24                      |
| <b>GBC28B</b> | 56.8   | 2.24 | 29.2 | 1.15 | 34.0/37.8 | 1.49/1.34 | GG28B, AG27               |

**\$0.65 ea**

**\$2.90 ea**

**\$2.90 ea**

**\$3.30 ea**

**\$3.95 ea**



**RENZETTI BUTT CAPS \$23.00 EACH  
ISLANDER GOLD, BLUE, BLACK  
& SILVER WITH GOLD TRIM**



BCL28B



BC20B-CCHD

## COMPOSITE CORK BUTT CAPS

- Made of a durable and flexible composite cork compound.
- Fits the butt end to cushion and protect the rod from becoming soiled or damaged.

**\$3.95**

| ITEM NO.   | LENGTH |      | I.D. |      | O.D. |      | Fits Grips                                          |
|------------|--------|------|------|------|------|------|-----------------------------------------------------|
|            | mm     | inch | mm   | inch | mm   | inch |                                                     |
| BC20B-CCHD | 27.1   | 1.07 | 19.7 | 0.76 | 32.3 | 1.27 | RB5, RB8, RB9, all cork with tenon except SR15A-575 |

**\$3.95**

|           |      |      |      |      |      |      |                             |
|-----------|------|------|------|------|------|------|-----------------------------|
| BC25-CCHD | 25.3 | 1.00 | 25.8 | 1.02 | 31.5 | 1.24 | RB11, RB13, RB14, SR15A-575 |
|-----------|------|------|------|------|------|------|-----------------------------|



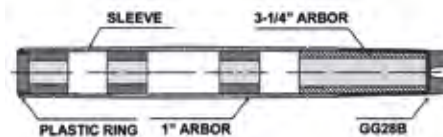
BC25-CCHD

# MODELS DLSS

## DURALITE BUTT SLEEVE ASSEMBLY

- DuraLite Butt Sleeve assembly includes the sleeve, top ring, gimbal, three grooved arbors, and one tapered grooved arbor for connecting the gimbal to the sleeve.
- DuraLite butt sleeves, caps, and gimbals are manufactured from a light weight fiberglass-reinforced Nylon 66 material.
- The 3 1/4" grooved arbor is tapered for a secure fit connecting the sleeve with our GG28B gimbal.
- Super-light grooved arbors (I.D. 16mm) are made of polyurethane and can be reamed to larger sizes to fit a wide variety of blank diameters.

| ITEM NO. | LENGTH |           | SLEEVE I.D. mm |       | O.D. mm |       |
|----------|--------|-----------|----------------|-------|---------|-------|
|          | mm     | inch      | mm             | inch  | mm      | inch  |
| DLSS1    | 277.8  | 10-15/16" | 27.1           | 1.067 | 31      | 1.220 |
| DLSS2    | 341.3  | 13-7/16"  | 27.1           | 1.067 | 31      | 1.220 |
| DLSS3    | 379.4  | 14-15/16" | 27.1           | 1.067 | 31      | 1.220 |



**DLSS1 \$21.70**

**DLSS2 \$23.85**

**DLSS3 \$2715**

DLSS3



# MODELS DLS

## DURALITE BUTT SLEEVE

We offer our DuraLite Butt Sleeve by itself for use in building larger diameter rods without the need for arbors.

| ITEM NO. | LENGTH |      | I.D. |       | O.D. |       |
|----------|--------|------|------|-------|------|-------|
|          | mm     | inch | mm   | inch  | mm   | inch  |
| DLS1     | 203.2  | 8.0  | 27.1 | 1.067 | 31   | 1.220 |
| DLS2     | 266.7  | 10.5 | 27.1 | 1.067 | 31   | 1.220 |
| DLS3     | 317.5  | 12.5 | 27.1 | 1.067 | 31   | 1.220 |



DLS3

**DLS1 \$8.75**

**DLS2 \$11.40**

**DLS3 \$13.90**

